



Pro Cinema Line

let us entertain you ..

PRO5DL

Full High Definition high brightness projector

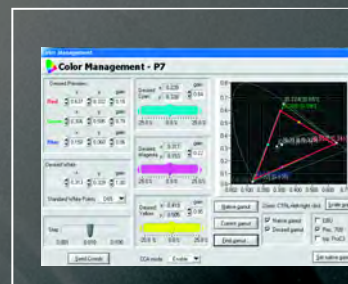
Key Features

- 3 x 0,95" 1080p DLP® DarkChip4™ by Texas Instruments
- Full HD 1920x1080 pixels
- High brightness 7500 ANSI lm for big Screen over 15mts (49 ft) in cinemascope
- Full Digital and professional Inputs: DVI or HDMI™, HD-SDI and Ethernet control connection
- Greater freedom in professional picture adjustment through: P7 Wide color gamut compatible with REC709
- High Bit rate video processing (10 bit per color)
- Zoom /Focus PLUS Horizontal/ Vertical shift with memo position
- Choice of 6 lenses: from Wideangle to Tele
- Dust Filters
- Customizable formats (CinemaScope (2.35:1), Academy (1.85:1) & wide (1.78:1))
- Easy Cinema Software
- Remote control and monitoring via network interface
- Dual Lamp Management for higher brightness, perfect sreen size match, more durability and 24/7 applications

The PRO5DL projection system has been designed to meet the requirements of the E-Cinema market, offering a high quality product that meets the increased interest of theatre owners to display digital contents.

Incorporating the latest generation of 3-chip DLP® technology SIM2's PRO5DL projection system provides images of exceptional brightness, maximum resolution, color depth and a native contrast ratio of >2500:1 for deep blacks and dynamic image, without Iris or lens shutters. In fact, this 3-Chip DLP® is considered the pinnacle of digital projection and it is this technology which forms the basis of the PRO5DL. Three 0.95" DarkChip4™ DMDs are utilized in this design to produce a resolution of 1920x1080 pixels (1080p) in order to achieve crystal-clear, uncompressed HD images. With its state-of-the-art optical engine and for optimum performance, this professional projector uses customized optical components, lenses and prisms. Latest 10-bit per color video processing reproduces images flawlessly and a dual lamp system assures durability for professional 24/7 applications.

SIM2's Live Color Management (via OSD) offers complete control over color temperature via user-defined adjustments corresponding to specific points on the CIE chart that defines color hue and saturation. Plus, the Gamma Correction curves optimize image-based variations in the source material and individual preferences.



EASY CINEMA SOFTWARE

- Projector full remote control.
- Connection management
- P7 color management
- Customizable white point.



The new SIM2 EASYCINEMA dedicated professional Software provides a perfect colorimetry calibration order to set performances at the highest possible level.

Installation flexibility is ensured with a wide range of projection lenses. The high quality lenses with high-resolution optics are with both motorized zoom and focus adjustments and motorized horizontal/vertical shift.

Technical features



[WWW.SIM2.COM](http://www.sim2.com)

LIGHT ENGINE

Technology: 3 chip DMD 0,95" 1080p DarkChip4™
Resolution: 1920 x 1080 pixels
Brightness: 7500 ANSI lumen
Contrast ratio: >2500:1 "full on/full off"
Lens: High quality, high resolution optics with both motorized zoom and focus adjustments and motorized horizontal/vertical shift
Lamp power & life time*: 300W (x2) (dimmable to 250W), 3000 hours* eco mode

LENS OPTIONS

Lens Type L0 (Optional): Throw ratio 0.67:1 (Fixed wide angle) - Throw distance 1.1-3.2 mt
Lens Type L1 (Optional): Throw ratio 1.12:1 (Fixed wide angle) - Throw distance 3-15 mt
Lens type L2 (Optional): Throw ratio 1.39 - 1.87:1 - Throw distance 4-24 mt
Lens type L3 (Optional): Throw ratio 1.87 - 2.56:1 - Throw distance 4-24 mt
>>> Lens type L4 STANDARD: Throw ratio 2.56 - 4.16:1 - Throw distance 9,1-45 mt
Lens type L5 (Optional): Throw ratio 4.16 - 6.96:1 - Throw distance 12-80 mt

INSTALLATION

Lens shift: V +/-70% , H +/-15% motorised (not for FWA lenses L0 and L1)
Digital keystone adjustment: V +/-22°
Picture size (inches diagonal): up to 15mts (49 ft) in cinemascope
Aspect ratio: 4:3, 16:9 Anamorphic, LetterBox, panoramic, pixel to pixel + 3 custom-user adjustments

ELECTRONICS

Horizontal & vertical scan freq.: 15-120kHz/48-100Hz + 24Hz*
SDTV: PAL (B,G,H,I,M,N,60); SECAM; NTSC automatically selected.
Video modes:
- Interlaced: 576i & 1080i @25Hz, 480i & 1080i @30Hz
- Progressive: 720p e 1080p @23,98/24/25/29,97 Hz; 576p, 720p e 1080p @ 50 Hz; 480p 720p & 1080p @60 Hz.
PC/Mac: from VGA to UXGA @ 65Hz*
Video processor: built in, full 10 bit.
Max frame delay: 4
Special video adjustments: Temporal Noise Reduction, Spatial Noise Reduction.
Other special adjustments: Memories/Overscan, Live

Colors Management (LCM) and Gamma Functions (* in accordance with the list of implemented graphic modes)

INPUTS/OUTPUTS

1 x Composite Video (RCA)
1 x S-Video (mini Din 4 pin)
1 x RGBS/YCrCb (4x RCA)
1 x RGBHV/YCrCb (5x BNC)
6 x HDMI – HDCP compliant (6x HDMI)
1 x DVI (1x DVI-D)
1 x HD-SDI (1x BNC)
2 x VGA (DB15)
1 x RS232 (DB9)
1 x USB connector (USB)
1 x LAN (RJ45)
2 x OUT 12V 100mA (via Jack)

GENERAL SPECIFICATIONS

Software control: upgradable via RS232 serial interface USB & LAN
Mains voltage range: 100-240Vac ±10% (48/62Hz)
Power consumption: approx. 700W
Weight: approx. 50 Kg (110 lbs) including lens
Dimensions (WxHxD): 570x260x730mm (22.4"x10.24"x28.7")

CERTIFICATIONS

Safety: in compliance with EN 60950/UL60950
Emission: in compliance with EN 55022
Immunity: in compliance with EN 55024

SUPPLIED ACCESSORIES

Installation & User Manual; AC power cords (EU, UK & USA) 2m (6.6 ft);
Remote control and batteries
EasyCinema Software

OPTIONAL ACCESSORIES

- Ceiling brackets
- Stacking System: Kit Stack Pro for dual projection stack (see picture below)

Headquarters:
SIM2 MULTIMEDIA S.p.A.
Viale Lino Zanussi, 11
33170 Pordenone - Italy
Tel. +39.0434.383215
Telefax +39.0434.383260
E-mail: info@sim2.it
Web site: www.sim2.com

Germany:
SIM2 DEUTSCHLAND GmbH
ArndtStr. 34-36
D-60325 Frankfurt Am Main
Tel. 0800.8007462 (toll free)
International tel.
+49.163.5007462
Telefax 0800.9007462
e-mail: info@sim2.de
web site: www.sim2de.com

UK:
SIM2 UK LTD
Steinway House, Worth Farm
Little Horsted, Nr. Uckfield
East Sussex TN22 5TT
Tel. +44.(0)1825.750850
Telefax +44.(0)1825.750851
e-mail: info@sim2.co.uk

USA:
SIM2 USA INC.
10108 USA Today Way
Miramar, FL 33025
Tel. +1.954.442.2999
Telefax +1.954.442.2998
E-mail: sales@sim2usa.com
Web site: www.sim2usa.com

CHINA:
SIM2 Multimedia S.p.A.
Shanghai Representative Office
Room 905, Jing'an Tower 1701
Beijing Road West
200040, China
Tel: +86.21.62881991
E-mail: vsheng@sim2.com
Web site: www.sim2.net.cn



(*) Lamp life: the hours quoted have been measured in a lab under strict test conditions. Lamp life varies depending on usage conditions and the surrounding environment. The measured lamp life cannot be guaranteed and is not protected by warranty. Digital Light Processing® and DLP® are registered trademarks of Texas Instruments. Due to constant product development, specifications and design might be subject to change without notice. SIM2 Professional systems - Pro5DL Catalog WORLD - May 2008

SIM2 Multimedia is certified
UNI EN ISO 9001